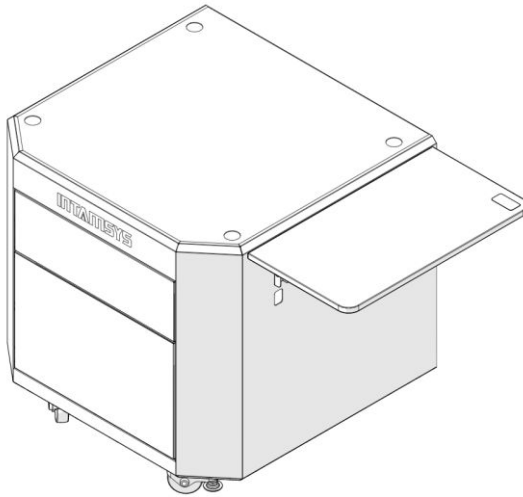


INTAMSYS



USER MANUAL

INTAMCabinet

1 Service and Safety Notice

1.1 Service

Please contact INTAMSYS customer support for any problem not covered by this guide during your use of the independent filament box (hereinafter referred to as “INTAMCabinet”).

Region	E-mail
Asia Pacific	Support_APAC@intamsys.com
Europe, Middle East and Africa	Support_EMEA@intamsys.com
North America / Latin America	Support_America@intamsys.com

1.2 Safety Notice

1. If the INTAMCabinet is placed in a fixed place for a long time, be sure to fix 4 casters. How to fix the casters please refer to Section 3.
2. The drawers and pallets must be within the load-bearing range and do not overload.

2 Introduction

2.1 Specification

Product Name	INTAMCabinet
Product size	727 x 670 x 700mm
Size with pallet unfold	1000 x 670 x 700mm
Pallet size	550x300x15mm
Package Size	760 x 700 x 730mm
Environment temp.	-10°C~60°C
Product weight	60kg

2.2 Packing List

Cabinet	× 1
Tools pallet	× 1
User manual	× 1

2.3 Components

INTAMCabinet provides a support platform for the FUNMAT PRO 310, which is convenient for printer operation. The bottom of cabinet is equipped with 4 casters for easy overall movement. INTAMCabinet has two drawers. The upper can store tools and spare parts, and the lower can store filaments.

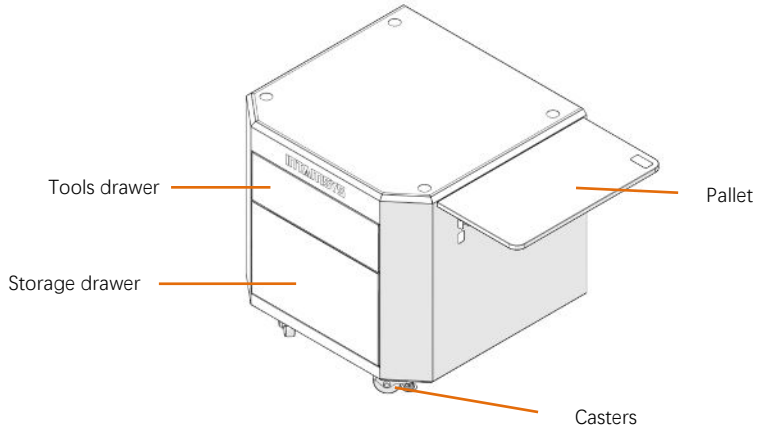


Figure 2.1 Schematic diagram of INTAMCabinet

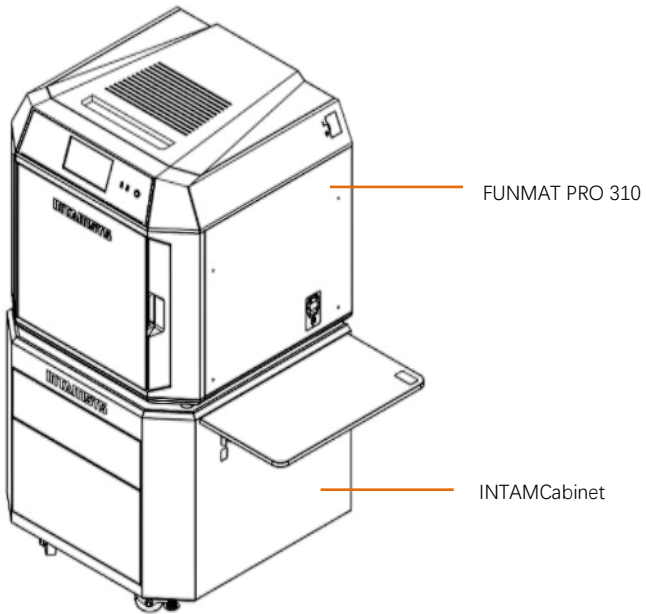


Figure 2.2 Schematic diagram of INTAMCabinet with FUNMAT PRO 310

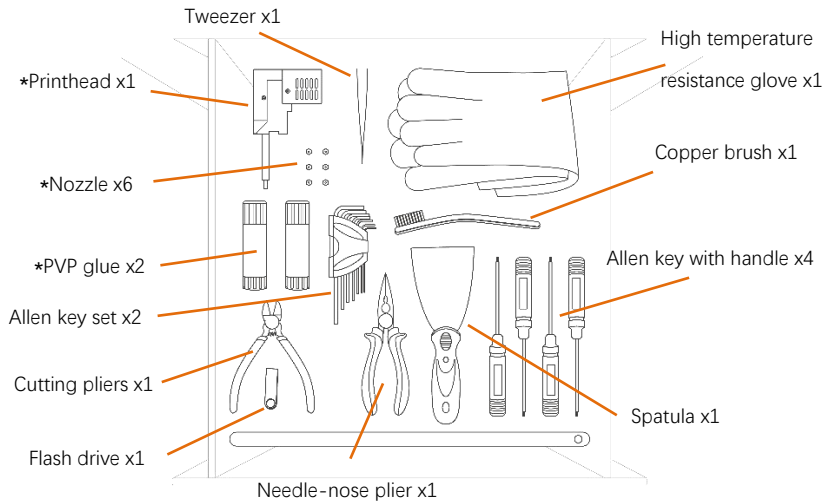


Figure 2.3 Tools in upper drawer(* Printhead/Nozzle/PVP glue Need to purchase separately)

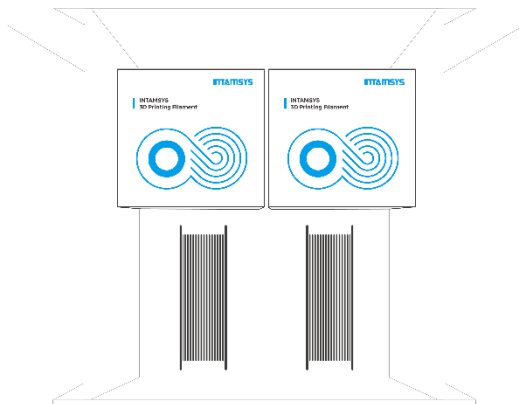


Figure 2.4 Filaments in lower drawer

3 Operation

3.1 Unfold/fold pallet

As shown in the picture, **counterclockwise rotate** the pallet until you hear a “click” to unfold the pallet.

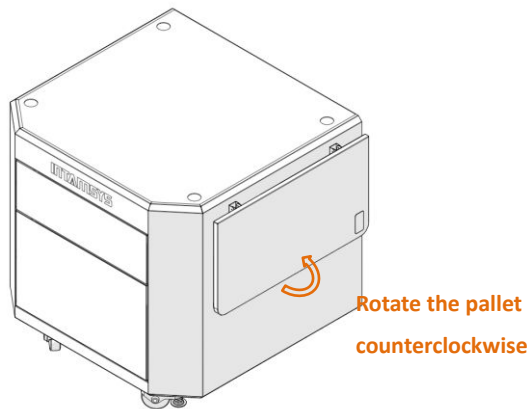


Figure 3.1 Unfold the pallet

Press the quick release buckles on both sides at the same time, rotate the pallet **clockwise** and fold the pallet.

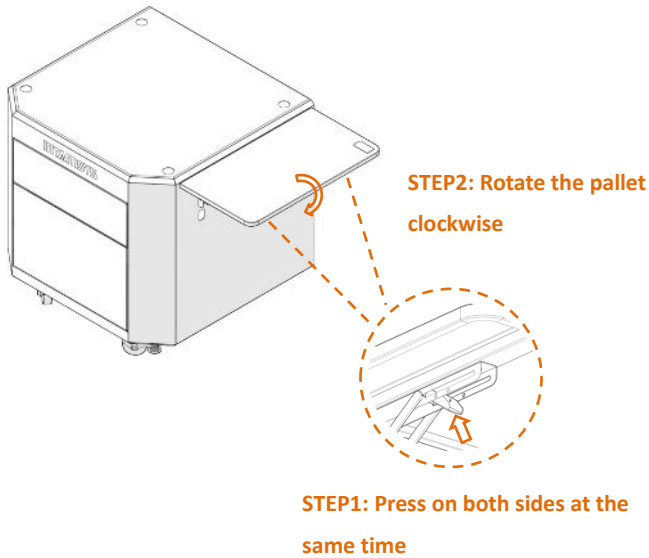


Figure 3.2 Fold the pallet

3.2 Casters fixed

When the FUNMAT PRO 310 is placed on top of INTAMCabinet and ready to print, in order to avoid printing quality problems or safety problems caused by the shaking of the cabinet, it is recommended to fix the casters before printing, also make sure the 4 feet of the printer are inserted into the grooves.

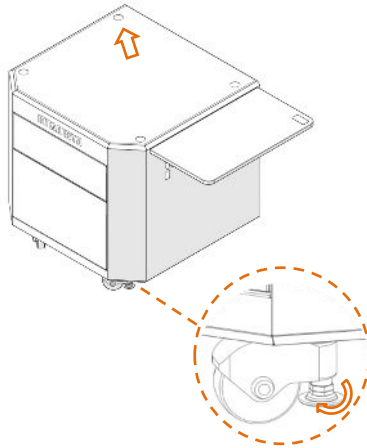


Figure 3.3 Fix the casters

3.3 Drawer unlock and open

The drawer of the cabinet is opened by PUSH-PUSH, first press the drawer inward, and the drawer will pop out automatically, press it again, and the drawer will close.

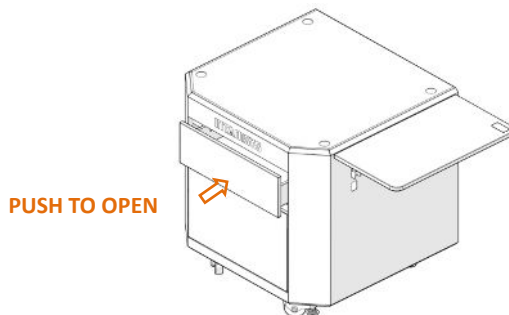


Figure 3.4 Open the drawer

4 Warranty Instructions

4.1 Warranty period

Items		Warranty duration
INTAMCabinet	Body	1 year
	Tools kit	3 months

4.2 Non-warranty regulations

1. Damage caused by improper use, maintenance or storage;
2. Damage caused by natural disasters such as: fire, flood, earthquake;
3. Damage caused by private demolition;
4. Warranty certificates do not conform to the product, altered or forged;
5. Service items or contents beyond the warranty period or not promised by the manufacturer for free;
6. The performance indicators or technical parameters meet the product design and specification standards.



www.intamsys.com

info@intamsys.com



FOLLOW INTAMSYS ON

HEADQUARTERS:

INTAMSYS TECHNOLOGY CO., LTD.

Address: Building E11, No.3188 Xiupu Road, Shanghai, China

GERMANY BRANCH:

INTAMSYS TECHNOLOGY GmbH

Address: Zeppelinstr. 35, 73760

Ostfildern Deutschland

US BRANCH

INTAMSYS Technology, Inc.

Address: 11479 Valley View Road

Eden Prairie, MN 55344

Copyright ©2023 INTAMSYS Technology. All rights reserved. The information at hand is provided as available at the time of printing, INTAMSYS reserves the right to change any information without updating this publication.