

HOW TO Install the IDGA on a BMG-X2 extruder

Difficulty **Easy**
Steps **15**
Time Required **5 to 10 min**
Sections **1**



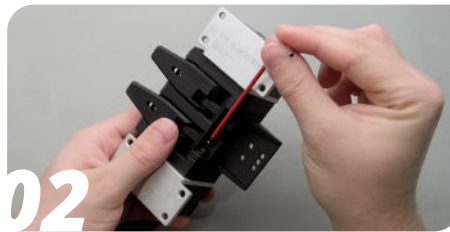
INSTRUCTIONS GUIDE

This guide is designed to be a reference manual for the installation of an IDGA Retro-fit Set on a BMG-X2 extruder. Follow the instructions below or, if you prefer to watch a YouTube video with the same instructions, use the provided link below or the YouTube icon to the right:

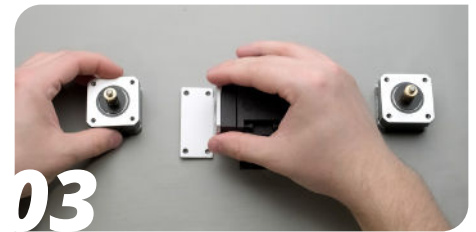
<https://youtu.be/7QU8K3jp8Q4>



01 Remove the BMG-X2 extruder from your printer and unpack the new IDGA kit.



02 Take out the screws from the extruder body.



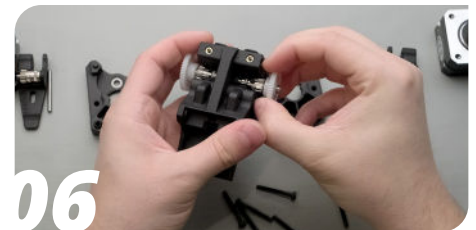
03 Pull apart the motors and the mounting plates.



04 Pull out the screws from the extruder body.



05 Pull apart the extruder body.

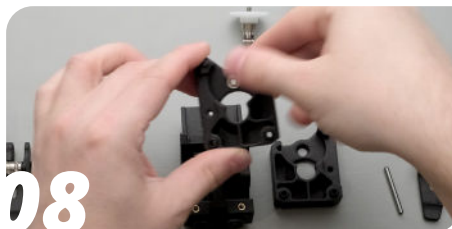


06 Pull out the existing shaft and primary gear.



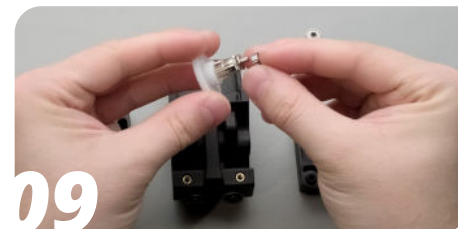
07

Take out the old ball bearings from the rear and middle body.



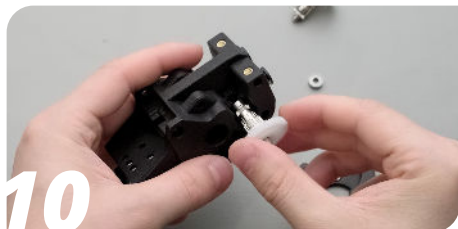
08

Place the new ball bearing into the rear part of the body.



09

Place the other ball bearing on top of the new IDGA shaft.



10

Insert the IDGA shaft to the middle body.



11

Press firmly to secure the ball bearing into its socket.



12

Repeat to the other side for both ball bearings.



13

Reassemble the extruder.



14

Put all the screws back in.



15

Reinstall the BMG-X2 in your printer.

IT'S DONE! TAKE GOOD CARE OF IT

Every 6 months, or sooner if you have a higher than 15h per week average usage, perform the following maintenance operations:

1. With a tooth brush and alcohol:
 - a. Clean the IDGA & secondary drive gear
 - b. Clean the needle bearings
 - c. Clean the secondary shaft
2. With a fine brush and lubricant
 - a. Apply a moderate amount of lubricant to the spur gear teeth of the drive gears, ensuring that excess lubricant does not spill over and cause the housing to become greasy
 - b. Lubricate the needle bearings
3. With compressed air
 - a. Blow the housing plastic parts to remove dust & dirt particles

HOW TO GET HELP

We are available to help you with any questions or issues you may have. Simply go to our website where you can access our customer support and send us your questions or follow the provided link:

https://www.bondtech.se/contact/#tab_technical-support-requests

