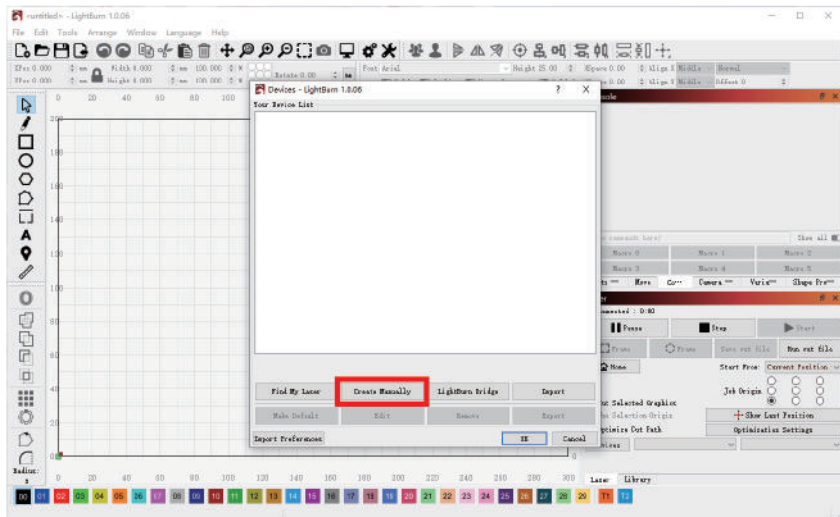
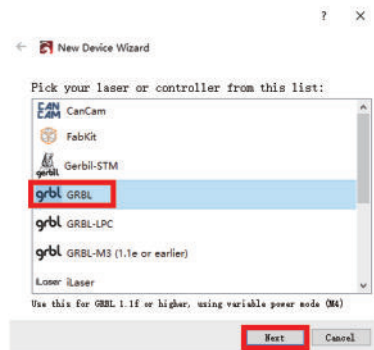


# Engraving and cutting with LightBurn

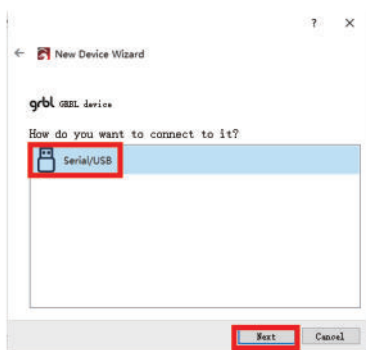
## 1. Connect the machine



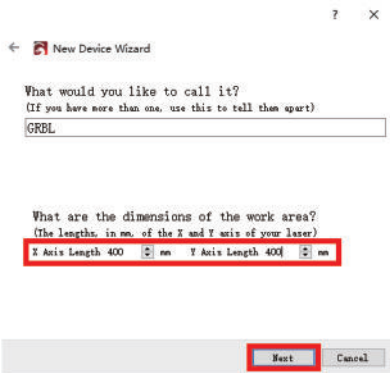
### 1. Click the "Create Manually"



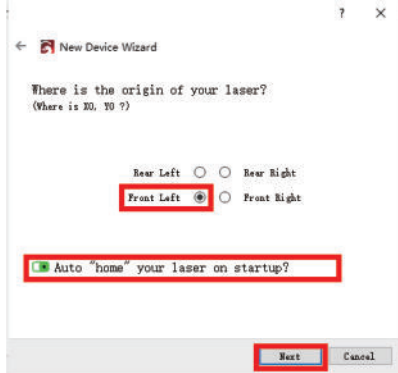
### 2. Click the "GRBL", then click "Next".



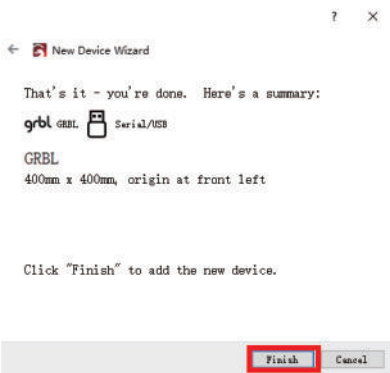
### 3. Click the "Serial/USB", then click "Next".



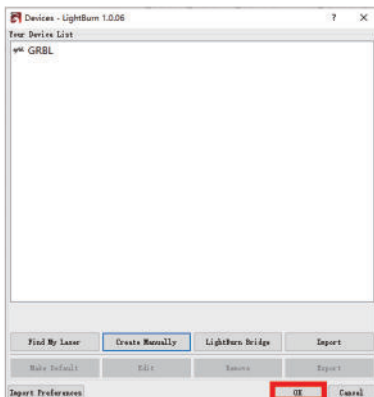
4. Modify "X Axis Length" and "Y Axis Length" to 400mm.



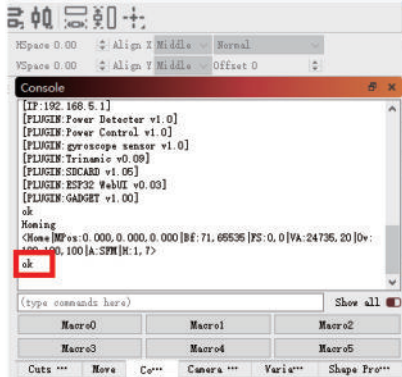
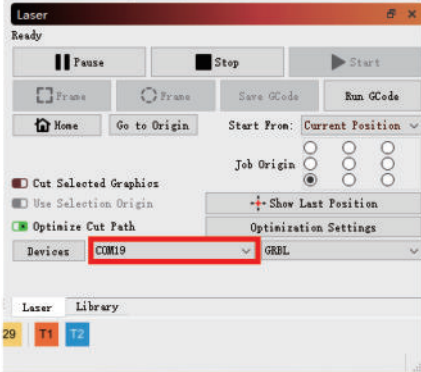
5. Select the origin "Front Left", turn on the machine and it will auto home, then click "Next".



6. Click the "Finish".



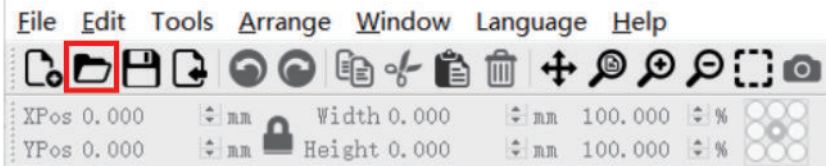
7. Click the "OK".



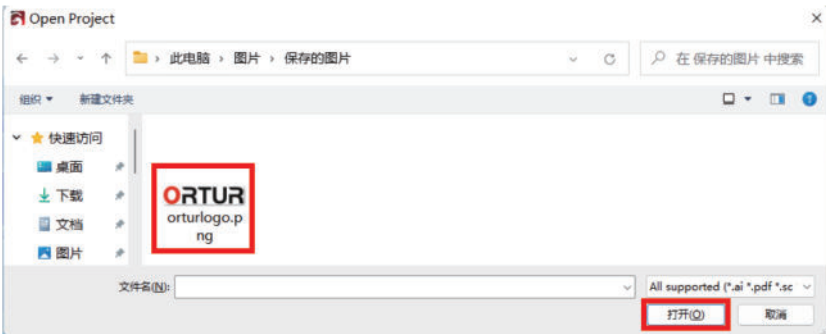
8. Select "COM19".

9. Connection succeeded.

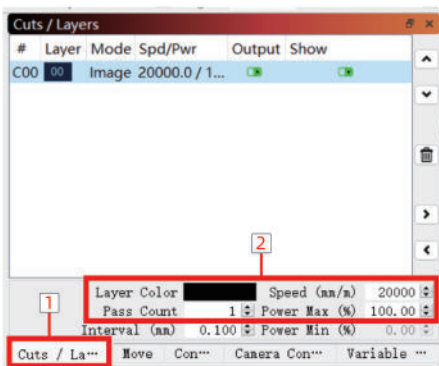
## 2. Engraving



1. Click the "Open" button



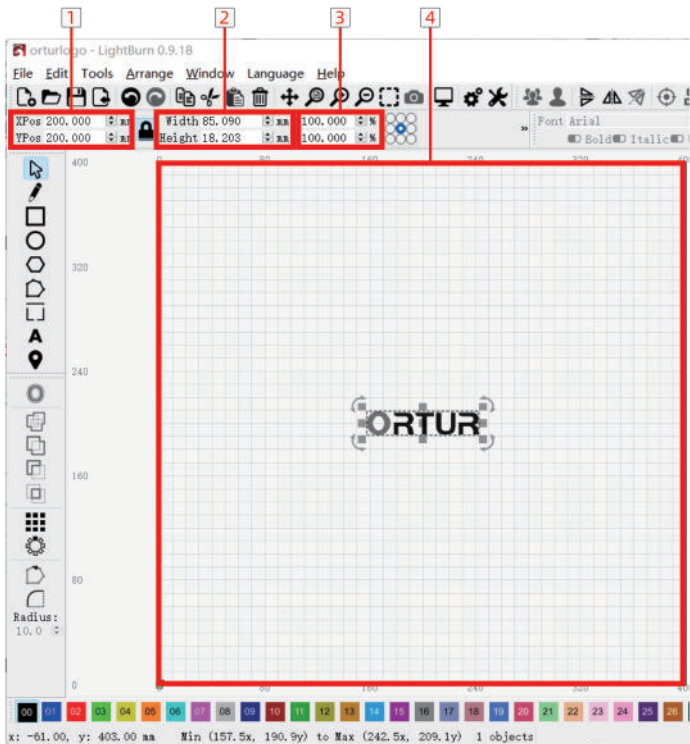
2. Select the engraving image, then click "Open".



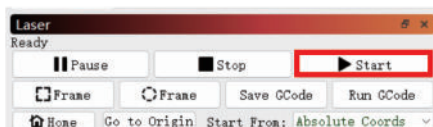
1. Click the "Cuts / Layers".

2. Modify the speed to 20000, "Pass Count" to 1, and "Power Max" to 100.  
(Note that the unit is mm/m)

**Note:** The engraving parameters are only for learning and reference, and the actual use will be affected by factors such as materials and engraving images!

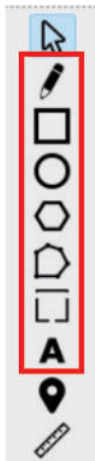
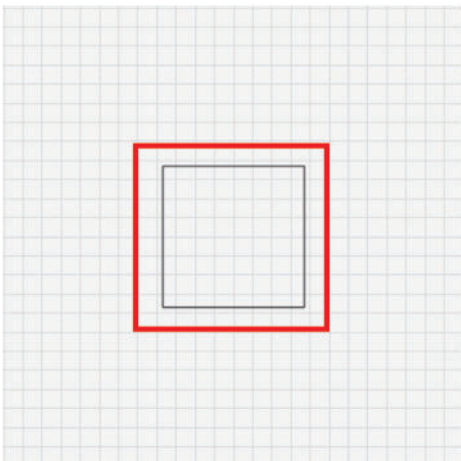


1. The coordinates of the center point of the engraving range
2. Engraving image size
3. Engraving image size ratio
4. The effective engraving range of the machine



Click the button in the red box to start cutting.

### 3. Cutting



You can draw lines using the tools included with the software, or import an existing line file.

The cut image must be lines!

Cuts / Layers

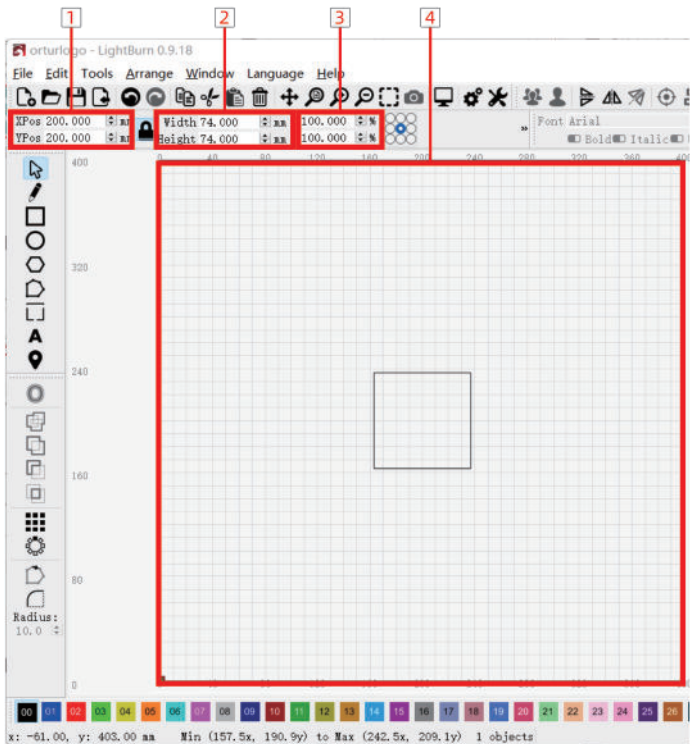
#	Layer	Mode	Spd/Pwr	Output	Show	Air
C00	00	Line	100.0 / 100.0	<input type="checkbox"/>	<input type="checkbox"/>	<input type="checkbox"/>

Layer Color  Speed (mm/m) 100

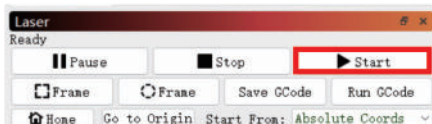
Pass Count 1 Power Max (%) 100.00

Interval (mm) 0.100

Modify the speed to 100, "Pass Count" to 1, and "Power Max" to 100.  
(Note that the unit is mm/m)



1. The coordinates of the center point of the engraving range
2. Engraving image size
3. Engraving image size ratio
4. The effective engraving range of the machine



Click the button in the red box to start cutting.