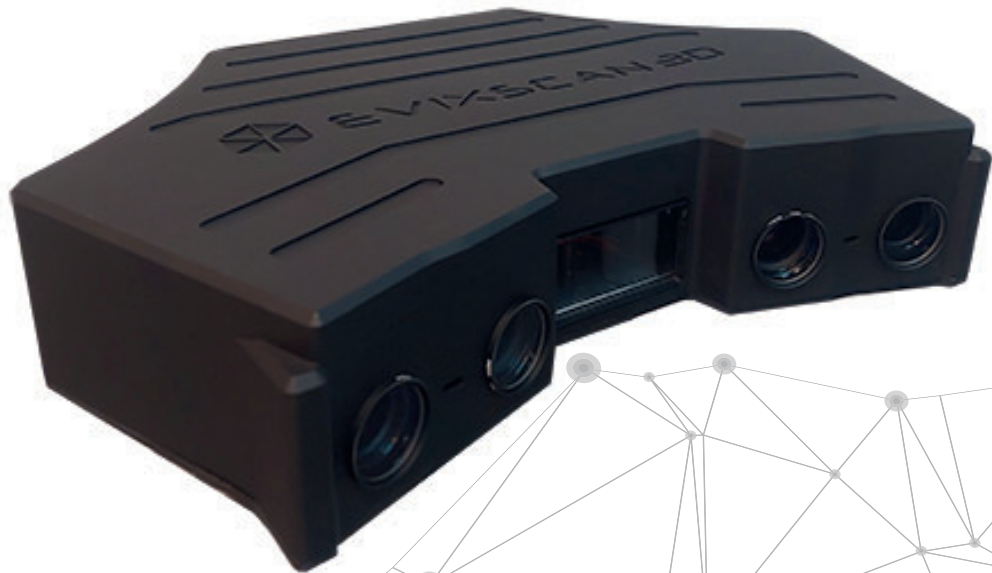


## eviXscan 3D Quadro+



### Two scanning ranges in one device

The eviXscan 3D **Quadro+** scanner is standing out for two scanning ranges which allow fast geometry measurement of large objects as well as precise measurement of smaller parts. Changing the scanning range is done under software control and no recalibration is required after changing the scanning range, so mixing the scans taken with different range settings to capture precisely complex shapes is easy.

**Quadro+** is a universal scanner that can accelerate measurement workflows for objects of different sizes. The use of the inner range enables efficient scanning of objects with a size of 120 to 450 mm [5" to 18"]. In the outer range the recommended size of scanned objects is from 250 to 1000 mm [10" to 40"].

Compared to our previous dual-range model, the **Quadro+** scanner has been equipped with cameras with much higher resolution (9 Mpix for outer range and 12 Mpix for inner range), which translates into greater measurement accuracy and higher quality of scans. Minimum scan acquisition time is 1.2 second.

# eviXscan 3D Quadro+ scanner

## Key features

- Universal solution – two scanning ranges in one device
- Easy to change scanning range without having to calibrate the scanner
- Higher quality pattern display with 1080 Mpix Blue LED projector
- Easy integration with cobots and robots



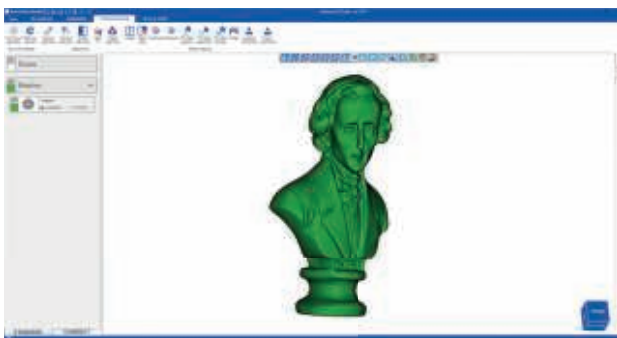
## Technical specifications

	Inner range	Outer range		
Measuring range	220 x 160 x 90 mm 8.6" x 6.3" x 3.5"	450 x 225 x 180 mm 17.7" x 8.9" x 7.1"	Software	eviXscan 3D Suite
Point density	351 pts/mm <sup>2</sup>	88 pts/mm <sup>2</sup>	Export formats	stl, ply, obj, asc, bin
Cameras resolution	12 Mpix	9 Mpix	Operating system	Windows 10 (64-bit)
Scanning accuracy*	up to 0.007 mm		Computer connection	USB 3.0
Light source	Blue LED		Hardware requirements	CPU i7, 32 GB RAM, NVMe SSD 480 GB
Scanning time	1.2 second			

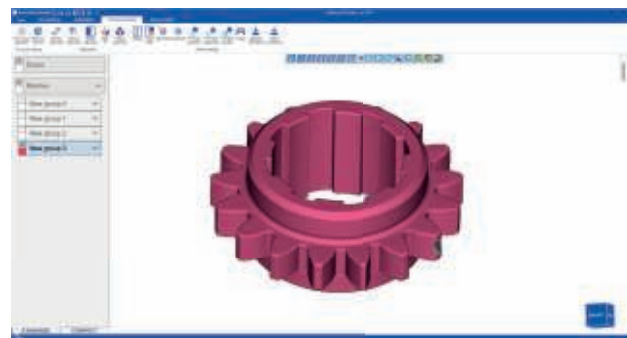
\*Accuracy determined with the use of the standard VDI/VDE 2634, Part 2, 4.1 P<sub>z</sub>

## One device – two scanning ranges

Two scanning ranges increase versatility of the Quadro+. The scanner efficiently acquires measurement data for objects of different sizes, which does not require having two devices with different ranges. Due to the reduction of the scanner-to-object distance (365 mm [14.4"] for the inner range and 550 mm [21.7"] for the outer range) the Quadro+ can scan even dark objects.



Outer scanning range



Inner scanning range

## A rich set of accessories

The standard delivery kit includes eviXscan 3D Suite software with USB dongle, flash drive with manual and a QuickStart guide, the sets of 9 mm [0.35"] and 20 mm [0.80"] coded markers - 1000 pcs of each type, the set of artefacts, tripod, A3 calibration board, 5 m [16 ft] cable harness (USB 3.0 and power cord), DC power supply, scanner handle, a rotary table (a load capacity up to 20 kg [44 lb]) and a transport case. A column stand is an optional accessory.